



Item # \_\_\_\_\_

Job \_\_\_\_\_

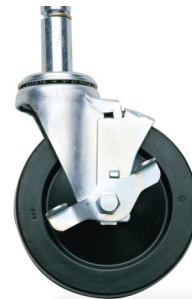
## METRO® CONDUCTIVE STEM CASTERS

- **Metro Conductive Stem Casters** are designed to fit Super Erecta Shelf® posts to form shelf carts and other mobile units.
- **Cart Washable:** Metro's conductive casters have grease seals and zerk fittings. Can withstand high-pressure washings.
- **Styles Available:** Swivel, foot-operated brake, and rigid casters available in conductive material.
- **Donut Bumpers:** Standard on all conductive casters.
- **Additional Caster Types Available.**

### Conductive



5MC Swivel



5MBC Wheel Brake



**Casters** — Conductive Stem Type



**InterMetro Industries Corporation**  
North Washington Street  
Wilkes-Barre, PA 18705  
www.metro.com



**11.21**



# METRO® CONDUCTIVE STEM CASTERS

## Dimensions

### Conductive Casters — Stem Type

| Model No. | Wheel Diameter<br>(in.) (mm) |     | Face<br>(in.) (mm) |    | Load Rating<br>(lbs.) (kg) |    | Type        | Approx. Pkd. Wt.<br>(lbs.) (kg) |     |
|-----------|------------------------------|-----|--------------------|----|----------------------------|----|-------------|---------------------------------|-----|
|           | 5                            | 127 | 1 1/4              | 32 | 175                        | 79 |             | 2 1/2                           | 1.1 |
| 5MC       | 5                            | 127 | 1 1/4              | 32 | 175                        | 79 | Stem/Swivel | 2 1/2                           | 1.1 |
| 5MBC      | 5                            | 127 | 1 1/4              | 32 | 175                        | 79 | Stem/Brake  | 2 3/4                           | 1.2 |
| 5MRC      | 5                            | 127 | 1 1/4              | 32 | 175                        | 79 | Stem/Rigid  | 3 1/2                           | 1.5 |

Brakes are foot-operated.

Note 1: To insure proper conductivity: 1) aluminum split sleeves must be used with each shelf.

2) casters must be maintained according to provided instructions.

Note 2: Stem casters are shipped with donut bumper **at no charge**.

Note 3: Rigid casters are held in position by a connecting channel. When ordering rigid casters, shelf width must be known.

Note 4: Load Height for all 5M conductive casters — 6 3/32" ± 1/16" (155 ± 1.5mm).

### Posts for Stem Casters

| Model No.<br>Plated | Model No.<br>Stainless | Height |      | Approx. Pkd. Wt. |      |
|---------------------|------------------------|--------|------|------------------|------|
|                     |                        | (in.)  | (mm) | (lbs.)           | (kg) |
| 33UP                | 33UPS                  | 33 7/8 | 861  | 2                | 0.9  |
| 54UP                | 54UPS                  | 54     | 1370 | 3                | 1.4  |
| 63UP                | 63UPS                  | 62     | 1575 | 3 1/2            | 1.6  |
| 74UP                | 74UPS                  | 74     | 1880 | 4                | 1.8  |
| 86UP                | 86UPS                  | 86     | 2185 | 5                | 2.3  |

These posts come without leveling bolt to accommodate stem casters.

All Metro Catalog Sheets are available on our website: [www.metro.com](http://www.metro.com)



#### InterMetro Industries Corporation

North Washington Street • Wilkes-Barre, PA 18705 • 570.825.2741  
Fax: 800.638.9263 (East Coast/Canada) • Fax: 800.638.3292 (West Coast)

FOR PRODUCT INFORMATION/CUSTOMER SERVICE:

U.S./Canada/Latin America: 1.800.992.1776 • Europe: +31.76.587.7550

Asia/Pacific: +65.6567.8003 • Middle East/Africa: +971.4.811.8286

Information and specifications are subject to change without notice. Please confirm at time of order

L02-041Ae  
Rev. 07/12  
Printed in U.S.A.

Copyright © 2012 InterMetro Industries Corp.